



# Road Fatalities for NSW

up to and including

**Tuesday, 09 December 2025**



**Fatalities advised since last update issued: 1**

**Fatalities excluded since last update issued: 1**

	CALENDAR YEAR TO MIDNIGHT 09 December					12-MONTH PERIOD ENDING 09 December				
	2025 (Prelim)	2024 (Final)	DIFF.	3-YEAR AVERAGE	DIFF.	2025 (Prelim)	2024 (Final)	DIFF.	3-YEAR AVERAGE	DIFF.
<b>Fatal crashes</b>	<b>319</b>	<b>280</b>	<b>39</b>	<b>272</b>	<b>47</b>	<b>337</b>	<b>297</b>	<b>40</b>	<b>290</b>	<b>47</b>
<b>Fatalities</b>										
Driver	141	151	-10	143	-2	152	161	-9	151	1
Passenger	55	44	11	49	6	59	50	9	53	6
Motorcyclist	69	67	2	55	14	71	70	1	61	10
Pedestrian	55	41	14	43	12	57	44	13	46	11
Pedal cyclist	12	4	8	6	6	13	4	9	7	6
Other	0	0	0	0	0	0	0	0	0	0
<b>Total Killed</b>	<b>332</b>	<b>307</b>	<b>25</b>	<b>297</b>	<b>35</b>	<b>352</b>	<b>329</b>	<b>23</b>	<b>318</b>	<b>34</b>

\* Motorcyclist and pedal cyclist includes passengers

<b>FINAL 2024 TOTALS:</b>	<b>Fatal crashes 298</b>	<b>Fatalities 327</b>
---------------------------	--------------------------	-----------------------

Preliminary Data - Note: Fatalities will be removed from statistics if subsequent Police or Coronial investigation shows that they did not fall within National reporting guidelines. Fatalities will be added from a crash occurring prior to today's date where a person subsequently dies within 30 days or the crash is reported late. Typically, these variations may result in a statewide annual decrease of up to 12 fatalities from the initial preliminary figure. Fatalities are deaths which occurred within 30 days of a crash as a result of injuries received in the crash. The crash must have occurred within the surveyed road reserve.



## Road Fatalities for NSW

up to and including

Tuesday, 09 December 2025



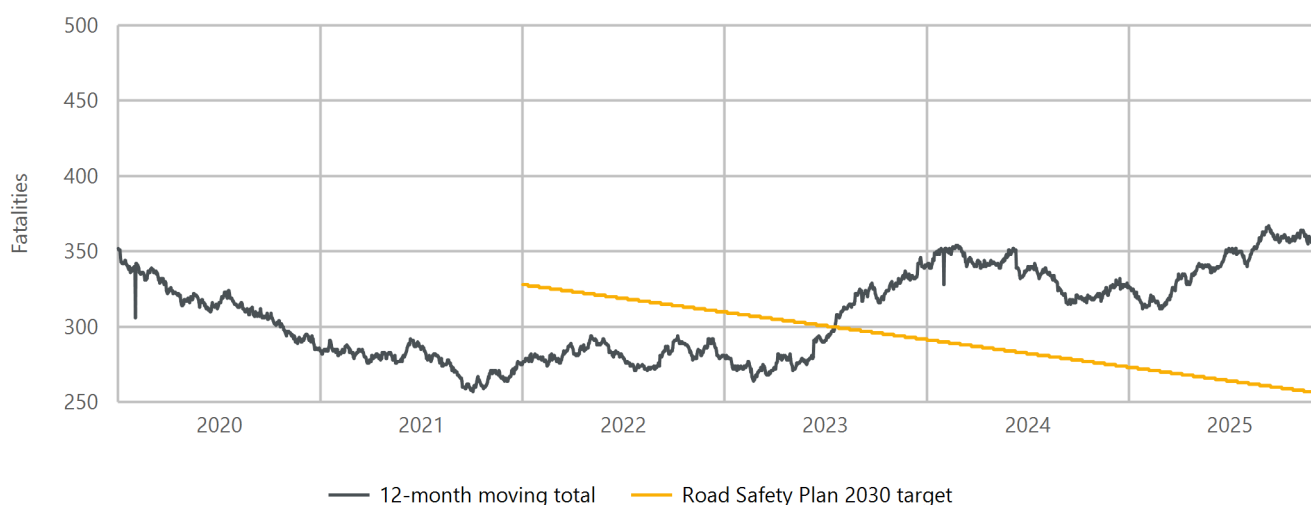
### NSW Road Fatality Statistics:

Up to and including 09 December 2025

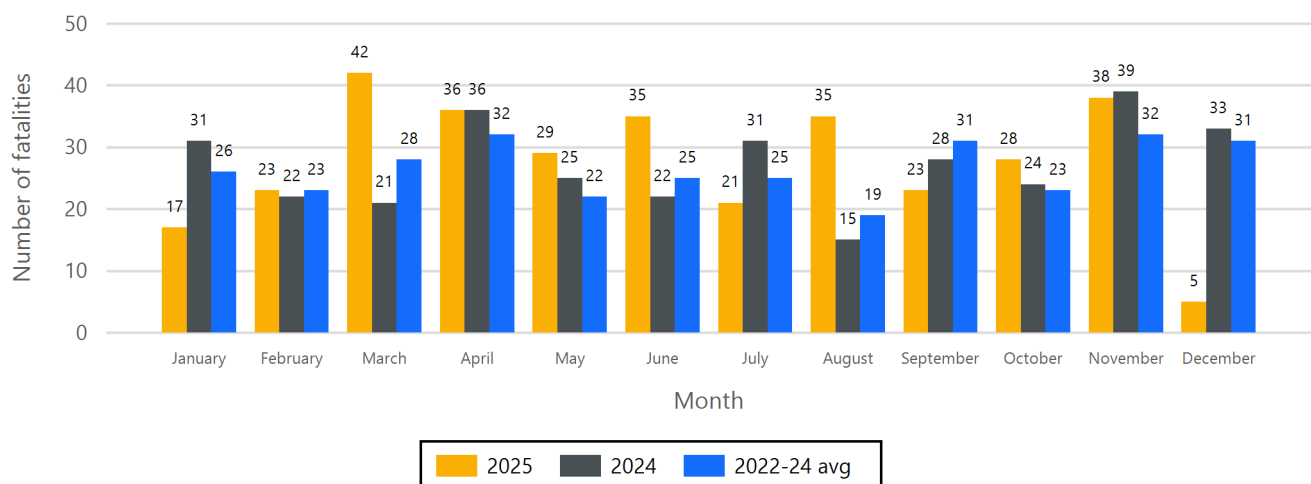
	2025	2024	+/-	% change
December to date	5	13	-8	-61.5
Calendar year to date	332	307	25	8.1
12-month period to date	352	329	23	7.0

NSW 50% Reduction Target : 256 , currently 96 over target

#### Fatalities 12-month moving total - 2020 to date



#### Road fatality comparative statistics by month for 2024, 2025 and the average for the 3-year period 2022-2024



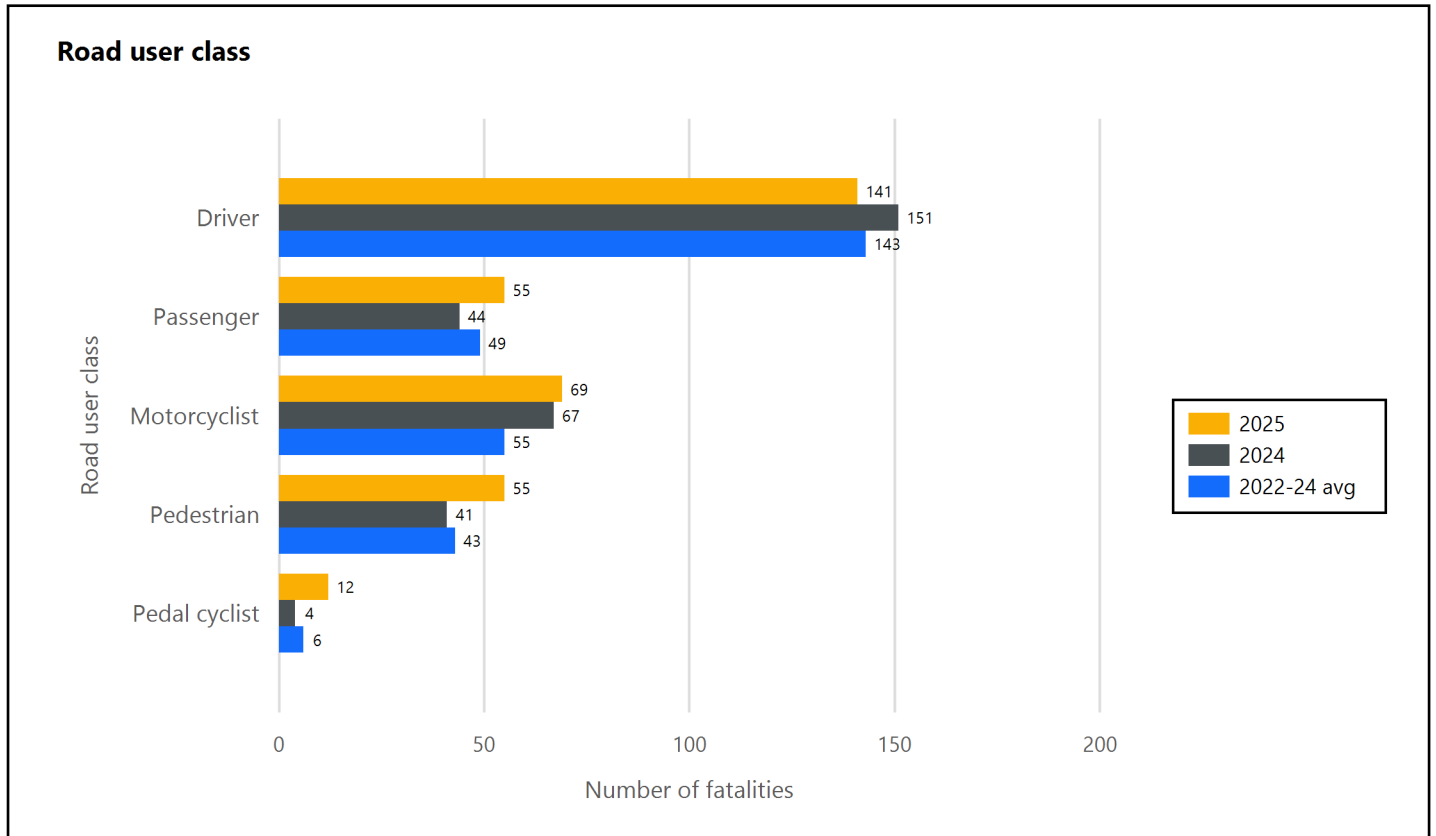
	2025	2024
Data completeness status	(Prelim)	(Final)

Preliminary Data - Note: Fatalities will be removed from statistics if subsequent Police or Coronial investigation shows that they did not fall within National reporting guidelines. Fatalities will be added from a crash occurring prior to today's date where a person subsequently dies within 30 days or the crash is reported late. Typically, these variations may result in a statewide annual decrease of up to 12 fatalities from the initial preliminary figure. Fatalities are deaths which occurred within 30 days of a crash as a result of injuries received in the crash. The crash must have occurred within the surveyed road reserve.

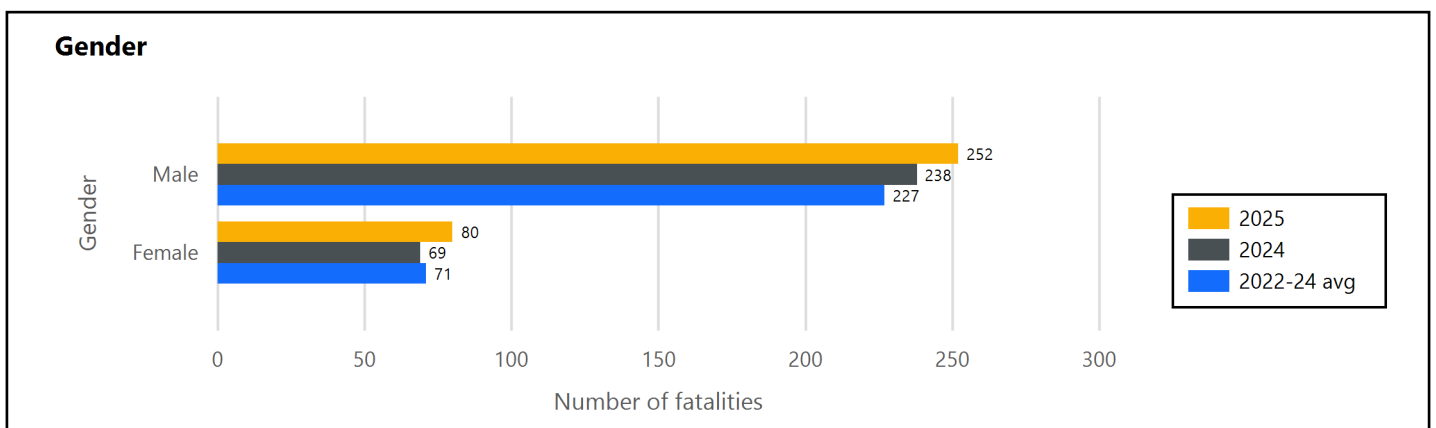
OFFICIAL

Generated: 10/12/2025 10:32

Road fatality comparative statistics for the period 01 January to 09 December 2024, 2025 and the average for the same period in 2022, 2023 and 2024



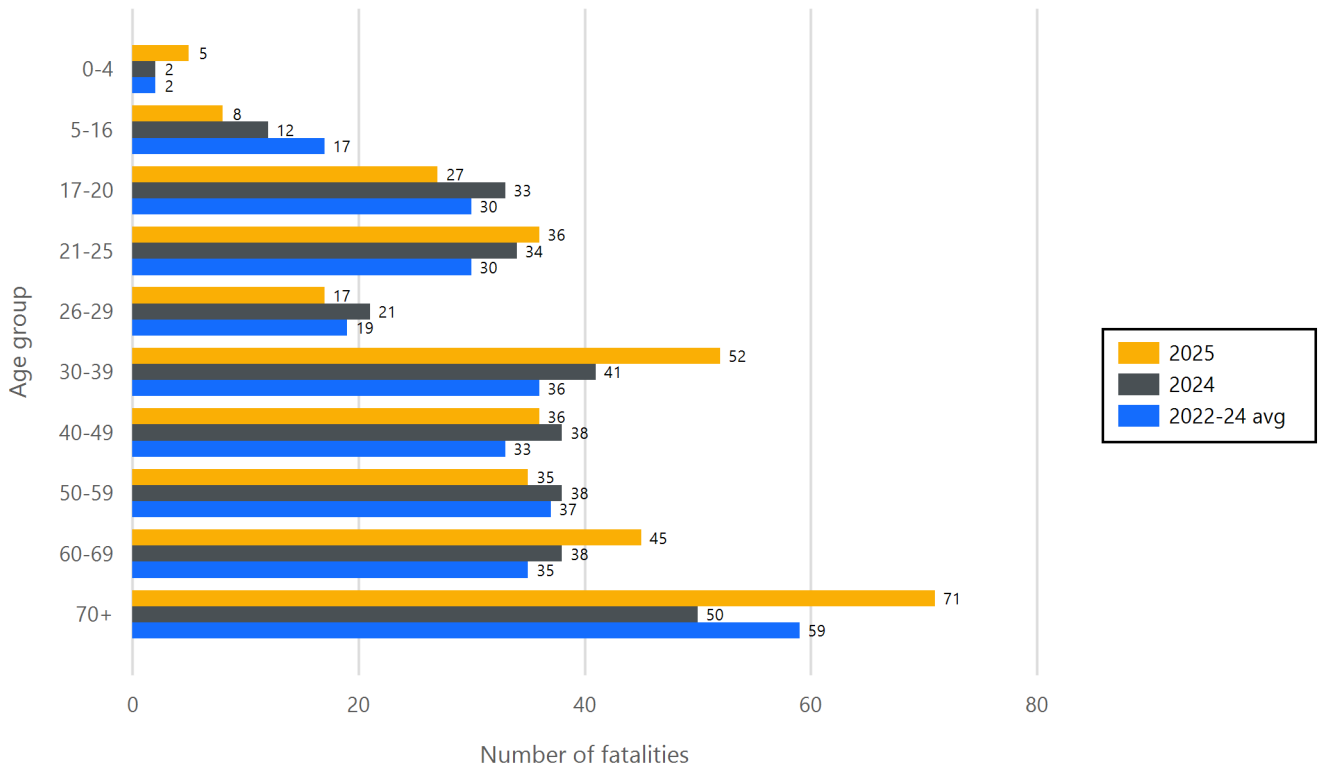
Motorcyclist & pedal cyclist includes passenger



Excludes unknown gender

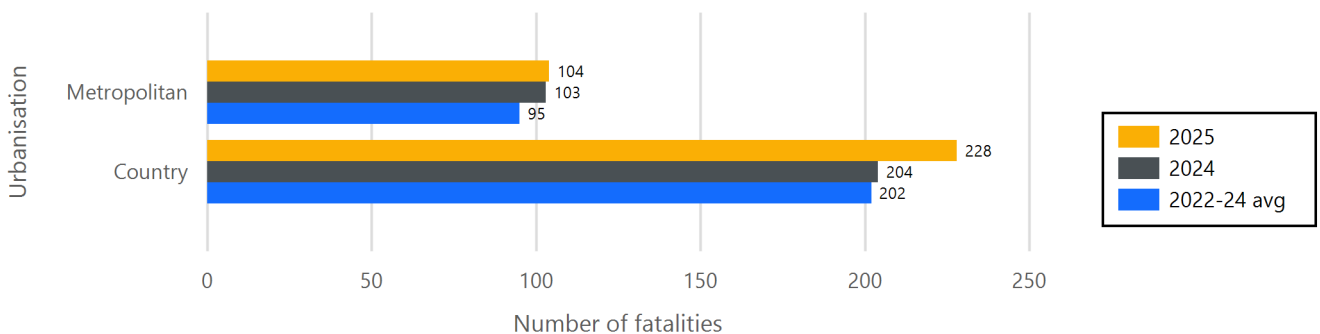
Road fatality comparative statistics for the period 01 January to 09 December 2024, 2025 and the average for the same period in 2022, 2023 and 2024

## Age group



Excludes unknown age

## Urbanisation



\* Fatality data are preliminary and subject to change



# Road Fatalities for NSW

up to and including  
Tuesday, 09 December 2025



Road fatality comparative statistics for the period 01 January to 09 December 2024, 2025 and the average for the same period in 2022, 2023 and 2024

Road user class	2025	2024	+/-	% change	3-year average
Driver	141	151	-10	-6.6	143
Passenger	55	44	11	25.0	49
Motorcyclist	69	67	2	3.0	55
Pedestrian	55	41	14	34.1	43
Pedal cyclist	12	4	8	200.0	6

Motorcyclist & pedal cyclist includes passenger

Gender	2025	2024	+/-	% change	3-year average
Male	252	238	14	5.9	227
Female	80	69	11	15.9	71

Excludes unknown gender

Age group	2025	2024	+/-	% change	3-year average
0-4	5	2	3	150.0	2
5-16	8	12	-4	-33.3	17
17-20	27	33	-6	-18.2	30
21-25	36	34	2	5.9	30
26-29	17	21	-4	-19.0	19
30-39	52	41	11	26.8	36
40-49	36	38	-2	-5.3	33
50-59	35	38	-3	-7.9	37
60-69	45	38	7	18.4	35
70+	71	50	21	42.0	59

Excludes unknown age

Urbanisation	2025	2024	+/-	% change	3-year average
Metropolitan	104	103	1	1.0	95
Country	228	204	24	11.8	202

\* Fatality data are preliminary and subject to change